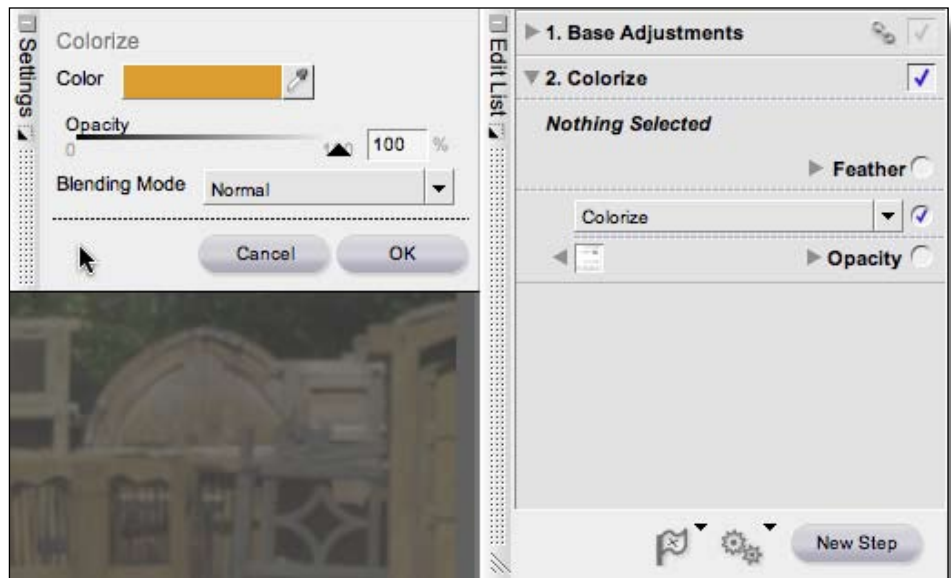


The Selection Brush-- creating a selection

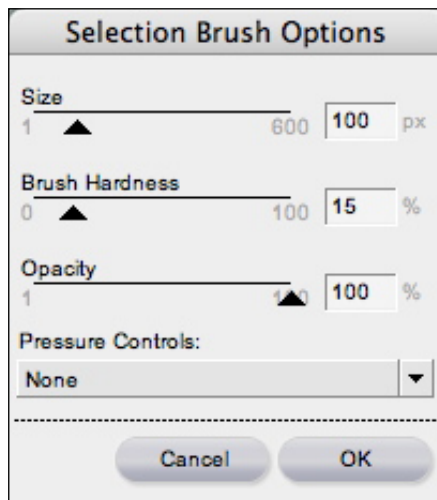
In this example, open the file wagon.nef from the Extras folder that came with this e-book.

1. Click the brush selection tool to activate it. You should see the plus (+) icon next to the brush icon become highlighted, too.

A new “colorize” step (with a lovely shade of orange) is now added to your Edit List by default. Think of the colorize tool as a paint tool for right now. Also notice that the Colorize Step shows “Nothing Selected”.



2. Double-click the selection brush icon to call up the brush options. Here you can set brush size and softness. You can also use keyboard shortcuts to change brush size ([and]), and control whether you are adding to (+) or subtracting (-) from you selection with the active tool.



3. Select a brush size of 100 pixels and a Brush Hardness of 15%. Click OK.

4. Use the brush to paint over the door of the wagon.

wagon.nef @ 16% | 22.5 MB (+ 87.0 MB temporary cache)



At this point, you should have an orange door and the Edit Step should read “Partially Selected”

5. Choose “Show Selection” from the View Menu.

You should see mostly red pixels, with the area over the door in white. This tells you that the “Colorize” effect is only being applied to the white areas-- the area you “unmasked” with the selection brush.

The default setting of “Colorize” is useful in this instance, because it lets us see what areas we’re painting.

wagon.nef @ 16% | 22.5 MB (+ 85.9 MB temporary cache)



In the Selection View, “masked” areas are shown in red, while “unmasked” areas are shown in white. Effects are only applied to unmasked areas.

